

Change Notice

JF Series

Changes to LED Specifications for JF Series Spot Illuminated Tactiles

Type of Change:

- ☒ Engineering ☐ Part Number
☒ Product ☒ Appearance



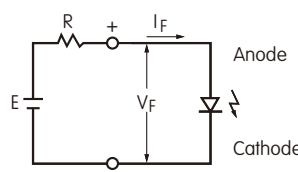
JF Series spot illuminated tactiles will have LED revisions.

1. The LED specifications for JF Series spot illuminated tactile switches will be undergoing changes. This will result in revisions to the electrical values, and will apply to red, yellow and green LEDs for standard or custom switches. Following is the comparison between the specifications before and after the changes. Effected standard part numbers are on page 2.

CHANGES TO LED SPECIFICATIONS FOR JF SERIES SPOT ILLUMINATED TACTILES							
LEDs are an integral part of the switch and are not available separately. Electrical specifications are determined at a basic temperature of 25°C.		Before Change			After Change		
		C	E	F	C	E	F
Color		Red	Yellow	Green	Red	Yellow	Green
Maximum Forward Current	I_{FM}	40mA	40mA	40mA	30mA	30mA	30mA
Typical Forward Current	I_F	30mA	30mA	30mA	20mA	20mA	20mA
Forward Voltage	V_F	1.7V	2.2V	2.2V	2.0V	1.9V	2.0V
		$I_F = 30mA$	$I_F = 30mA$	$I_F = 30mA$	$I_F = 20mA$	$I_F = 20mA$	$I_F = 20mA$
Maximum Reverse Voltage	V_{RM}	4V	4V	4V	5V	5V	5V
Current Reduction Rate Above 25°C	ΔI_F	0.67mA/°C	0.67mA/°C	0.67mA/°C	0.40mA/°C	0.40mA/°C	0.40mA/°C
Ambient Temperature Range		-25°C ~ +70°C			-25°C ~ +70°C		

Notes

- The LED circuit is isolated and requires an external power source.
- If the source voltage is greater than the LED's rated voltage, a ballast resistor must be connected in series with the LED. The resistor value can be calculated by using the formula shown here.
- There are no changes to the switches' external dimensions.
- Contact information is below if more details are needed.



$$R = \frac{E - V_F}{I_F}$$

Where: R = Resistor Value (Ohms)
 E = Source Voltage (V)
 V_F = Forward Voltage (V)
 I_F = Forward Current (A)

Effective Date

Changes to LED specifications for JF Series Spot Illuminated Tactiles will be effective April 2021.

NKK SWITCHES HONG KONG CO., LTD.

Rm. 601, Fook Yip Building, 53-57 Kwai Fung Crescent, Kwai Chung, N.T., Hong Kong.
 Tel.: (852)2366-6634 Fax.: (852)2366-6803 www.nkkswitches.com.hk E-mail: info@nkkswitches.com.hk

NKK SWITCHES CHINA CO., LTD.

Rm. 702, Center Tower, Huaning Plaza, 300 Xuanhua Rd., Changning, Shanghai China
 Tel.: (86)21-62496574 Fax.: (86)21-62483375 www.nkkswitches.com.cn E-mail: info@nkkswitches.com.cn

Contact No. 364

NKK
SWITCHES

Change Notice

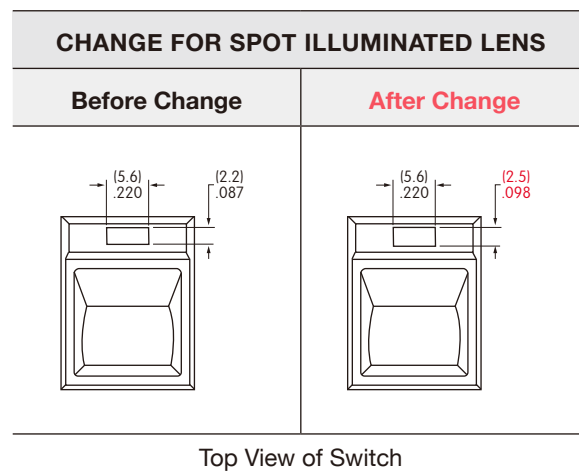
JF Series

Change to Dimension of JF Series Spot Illuminated Lens

Type of Change:

- ☒ Engineering ☐ Part Number
☒ Product ☒ Appearance

2. The JF Series spot illuminated switches will be having a change to the dimension of the lens for the spot illumination. The height of the lens will be changing from 2.2mm/.087" to 2.5mm/.098". This revision applies to all actuators with spot illumination: round, square and sculptured, and for both standard or custom switches. See the table below for effected standard part numbers.



Effected Standard Part Numbers

JF15RP1CC	JF15RP1GC	JF15RP2DC	JF15RP2HC	JF15RP3FC
JF15RP1CE	JF15RP1GE	JF15RP2DE	JF15RP2HE	JF15RP3FE
JF15RP1CF	JF15RP1GF	JF15RP2DF	JF15RP2HF	JF15RP3FF
JF15RP1DC	JF15RP1HC	JF15RP2FC	JF15RP3CC	JF15RP3GC
JF15RP1DE	JF15RP1HE	JF15RP2FE	JF15RP3CE	JF15RP3GE
JF15RP1DF	JF15RP1HF	JF15RP2FF	JF15RP3CF	JF15RP3GF
JF15RP1FC	JF15RP2CC	JF15RP2GC	JF15RP3DC	JF15RP3HC
JF15RP1FE	JF15RP2CE	JF15RP2GE	JF15RP3DE	JF15RP3HE
JF15RP1FF	JF15RP2CF	JF15RP2GF	JF15RP3DF	JF15RP3HF

Effective Date

Change to the dimension of the JF Series spot illuminated lens will be effective April 2021.

NKK SWITCHES HONG KONG CO., LTD.

Rm. 601, Fook Yip Building, 53-57 Kwai Fung Crescent, Kwai Chung, N.T., Hong Kong.
Tel.: (852)2366-6634 Fax.: (852)2366-6803 www.nkkswitches.com.hk E-mail: info@nkkswitches.com.hk

NKK SWITCHES CHINA CO., LTD.

Rm. 702, Center Tower, Huaning Plaza, 300 Xuanhua Rd., Changning, Shanghai China
Tel.: (86)21-62496574 Fax.: (86)21-62483375 www.nkkswitches.com.cn E-mail: info@nkkswitches.com.cn