

Contact No. 372



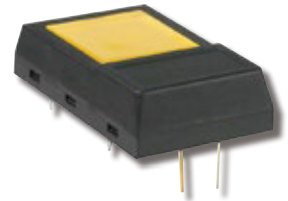
Change Notice

JF Series

Changes to LED Specifications for JF Series Full Face Illuminated Tactiles

Type of Change:

- Engineering Part Number
- Product Appearance



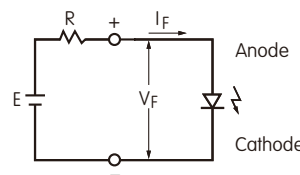
JF Series full face illuminated tactiles will have LED revisions.

The LED specifications for JF Series full face illuminated tactile switches will be undergoing changes. This will result in revisions to the electrical values, and will apply to yellow and green LEDs for standard or custom switches. Following is the comparison between the specifications before and after the changes. Effected standard part numbers are shown below.

CHANGES TO LED SPECIFICATIONS FOR JF SERIES FULL FACE ILLUMINATED TACTILES					
LEDs are an integral part of the switch and are not available separately. Electrical specifications are determined at a basic temperature of 25°C.		Before Change		After Change	
		E	F	E	F
Color		Yellow	Green	Yellow	Green
Maximum Forward Current	I_{FM}	30mA	30mA	30mA	30mA
Typical Forward Current	I_F	20mA	20mA	20mA	20mA
Forward Voltage	V_F	2.1V	2.3V	2.1V	2.1V
		$I_F = 20mA$	$I_F = 20mA$	$I_F = 20mA$	$I_F = 20mA$
Maximum Reverse Voltage	V_{RM}	4V	4V	4V	4V
Current Reduction Rate Above 25°C	ΔI_F	0.40mA/°C	0.40mA/°C	0.40mA/°C	0.40mA/°C
Ambient Temperature Range		-25 ~ +70°C		-25 ~ +70°C	

Notes

- The LED circuit is isolated and requires an external power source.
- For best results and safe use of the LEDs, the supply voltage should be more than the LED forward voltage. In addition, an appropriately valued ballast resistor should be used. Without the ballast resistor, the LED will be damaged or destroyed. The resistor value can be calculated by using the formula shown here.
- There are no changes to the switches' external dimensions.
- Contact information is below if more details are needed.



$$R = \frac{E - V_F}{I_F}$$

Where: R = Resistor Value (Ohms)
 E = Source Voltage (V)
 V_F = Forward Voltage (V)
 I_F = Forward Current (A)

Effected Standard Part Numbers

JF15AP1EE	JF15AP1FF
-----------	-----------

Effective Date

Changes to LED specifications for JF Series Full Face Illuminated Tactiles will be effective December 2021.

NKK SWITCHES HONG KONG CO., LTD.

Rm. 601, Fook Yip Building, 53-57 Kwai Fung Crescent, Kwai Chung, N.T., Hong Kong.
Tel.: (852)2366-6634 Fax.: (852)2366-6803 www.nkkswitches.com.hk E-mail: info@nkkswitches.com.hk

NKK SWITCHES CHINA CO., LTD.

Rm. 702, Center Tower, Huaning Plaza, 300 Xuanhua Rd., Changning, Shanghai China
Tel.: (86)21-62496574 Fax.: (86)21-62483375 www.nkkswitches.com.cn E-mail: info@nkkswitches.com.cn