

Change Notice

MS & SS Series

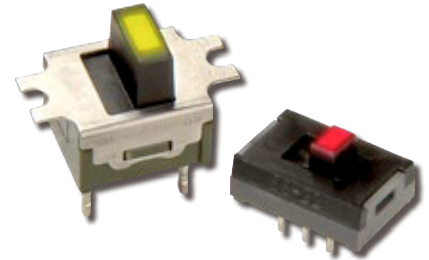
Changes to LEDs for MS & SS Illuminated Slides

Type of Change:

- ☒ Engineering ☐ Part Number
☒ Product ☒ Appearance


The red, yellow and green LEDs for MS and SS Series illuminated slide switches will be changing. The revision will effect the electrical specifications for the yellow and green LEDs, as shown on the following table.

Standard and custom MS and SS illuminated switches are included in the change, and part numbers for effected standard models are shown on page 2.



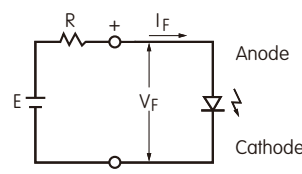
MS and SS Illuminated Slides will have LED Revisions.

CHANGES TO LED SPECIFICATIONS FOR MS & SS ILLUMINATED SERIES

 The electrical specifications shown are determined at a basic temperature of 25°C. The LED is an integral part of the switch and not available separately.	Before Change			After Change		
	C Red	E Yellow	F Green	C Red	E Yellow	F Green
Maximum Forward Current I_{FM}	30mA	30mA	25mA	30mA	30mA	30mA
Typical Forward Current I_F	16mA	16mA	16mA	16mA	16mA	16mA
Forward Voltage V_F	1.98V	2.06V	2.16V	1.98V	2.05V	1.95V
	$I_F = 16mA$	$I_F = 16mA$	$I_F = 16mA$	$I_F = 16mA$	$I_F = 16mA$	$I_F = 16mA$
Maximum Reverse Voltage V_{RM}	5V	5V	5V	5V	5V	5V
Current Reduction Rate Above 25°C ΔI_F	0.40mA/°C	0.42mA/°C	0.33mA/°C	0.40mA/°C	0.40mA/°C	0.40mA/°C
Ambient Temperature Range	-15° ~ +60°C			-15° ~ +60°C		

Notes

- The LED circuit is isolated and requires an external power source.
- For best results and safe use of the LEDs, the supply voltage should be more than the LED forward voltage. In addition, an appropriately valued ballast resistor should be used. Without the ballast resistor, the LED will be damaged or destroyed. The resistor value can be calculated by using the formula shown here.
- There are no changes to the switches' external dimensions.
- Contact information is below if more details are needed.



$$R = \frac{E - V_F}{I_F}$$

Where: R = Resistor Value (Ohms)
 E = Source Voltage (V)
 V_F = Forward Voltage (V)
 I_F = Forward Current (A)

Effective Date

Changes to LED specifications for MS and SS Series illuminated slides will be effective June 2022.

NKK SWITCHES HONG KONG CO., LTD.

Rm. 601, Fook Yip Building, 53-57 Kwai Fung Crescent, Kwai Chung, N.T., Hong Kong.
 Tel.: (852)2366-6634 Fax.: (852)2366-6803 www.nkkswitches.com.hk E-mail: info@nkkswitches.com.hk

NKK SWITCHES CHINA CO., LTD.

Rm. 702, Center Tower, Huaning Plaza, 300 Xuanhua Rd., Changning, Shanghai China
 Tel.: (86)21-62496574 Fax.: (86)21-62483375 www.nkkswitches.com.cn E-mail: info@nkkswitches.com.cn

Contact No. 379



Change Notice

MS & SS Series

Changes to LEDs for MS & SS Illuminated Slides

Effected Standard Part Numbers for MS Illuminated Slides			
MS12LNW03C	MS12LFW01C	MS13LNW03C	MS13LFW01C
MS12LNW03E	MS12LFW01E	MS13LNW03E	MS13LFW01E
MS12LNW03F	MS12LFW01F	MS13LNW03F	MS13LFW01F

Effected Standard Part Numbers for SS Illuminated Slides			
SS12SDP2LC	SS12SDH2LC	SS22SDP2LC	SS22SDH2LC
SS12SDP2LE	SS12SDH2LE	SS22SDP2LE	SS22SDH2LE
SS12SDP2LF	SS12SDH2LF	SS22SDP2LF	SS22SDH2LF

NKK SWITCHES HONG KONG CO., LTD.

Rm. 601, Fook Yip Building, 53-57 Kwai Fung Crescent, Kwai Chung, N.T., Hong Kong.
Tel.: (852)2366-6634 Fax.: (852)2366-6803 www.nkkswitches.com.hk E-mail: info@nkkswitches.com.hk

NKK SWITCHES CHINA CO., LTD.

Rm. 702, Center Tower, Huaning Plaza, 300 Xuanhua Rd., Changning, Shanghai China
Tel.: (86)21-62496574 Fax.: (86)21-62483375 www.nkkswitches.com.cn E-mail: info@nkkswitches.com.cn