

Contact No. 403

NKK
SWITCHES

Change Notice

LP01 Series

Changes for Bright Red LEDs in LP01 Series Pushbuttons

Type of Change:

- ☒ Engineering ☐ Part Number
☒ Product ☒ Appearance


The Bright Red LEDs for LP01 Series pushbutton switches will be changing. Both standard and custom pushbuttons are included in the revision. The change will effect electrical specifications, which are compared on the following table. Effected standard part numbers are shown below.



LP01 Series with Bright Red LEDs will Undergo Changes

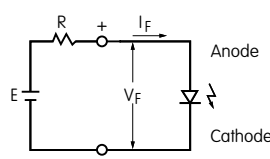
CHANGES TO SPECIFICATIONS FOR BRIGHT RED LED

The electrical specifications shown are determined at a basic temperature of 25°C.
Polarity marks are on bottom of switch. The LED is an integral part of the switch and not available separately.

Single Color LED with 1 Element		Before Change	After Change
		5C	5C
Maximum Forward Current	I_{FM}	30mA	30mA
Typical Forward Current	I_F	20mA	20mA
Forward Voltage	V_F	1.95V	2.05V
Maximum Reverse Voltage	V_{RM}	5V	10V
Current Reduction Rate Above 25°C	ΔI_F	0.41mA/°C	0.4mA/°C
Ambient Temperature Range		-10°C ~ +50°C	-10°C ~ +50°C

Notes

- The LED circuit is isolated and requires an external power source.
- For best results and safe use of the LEDs, the supply voltage should be more than the LED forward voltage. In addition, an appropriately valued ballast resistor should be used. Without the ballast resistor, the LED will be damaged or destroyed. The resistor value can be calculated by using the formula shown here.
- There are no changes to the switches' external dimensions.
- Contact information is below if more details are needed.



$$R = \frac{E - V_F}{I_F}$$

Where: R = Resistor Value (Ohms)
E = Source Voltage (V)
V_F = Forward Voltage (V)
I_F = Forward Current (A)

EFFECTED STANDARD PART NUMBERS FOR LP01 ILLUMINATED PUSHBUTTONS

LP0115CCKW015CA	LP0115CMKW015CA	LP0125CCKW015CA	LP0125CMKW015CA
LP0115CCKW015CB	LP0115CMKW015CB	LP0125CCKW015CB	LP0125CMKW015CB

Effective Date

Changes for LP01 Series Illuminated Pushbuttons with Bright Red LEDs will be effective April 2024.

NKK SWITCHES HONG KONG CO., LTD.

Rm. 601, Fook Yip Building, 53-57 Kwai Fung Crescent, Kwai Chung, N.T., Hong Kong.
Tel.: (852)2366-6634 Fax.: (852)2366-6803 www.nkkswitches.com.hk E-mail: info@nkkswitches.com.hk

NKK SWITCHES CHINA CO., LTD.

Rm. 702, Center Tower, Huaning Plaza, 300 Xuanhua Rd., Changning, Shanghai China
Tel.: (86)21-62496574 Fax.: (86)21-62483375 www.nkkswitches.com.cn E-mail: info@nkkswitches.com.cn