

Change Notice

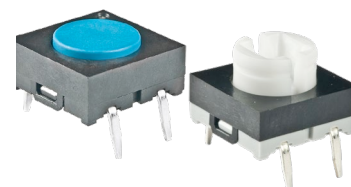
JB Series

Changes for Specific Models of JB Series Low Profile Process Sealed Tactile Switches

Type of Change:

- Engineering
- Part Number
- Product
- Appearance

There will be changes to the top of the switch case for specific JB Series low profile process sealed tactiles. The top of the case has a round concave impression in one of the corners, and an identical impression will be added in the diagonal corner of the case. This revision will apply to nonilluminated models with a flat blue button or, short actuator with straight PC terminals, and to illuminated models with a short actuator. Both categories will include standard and custom part numbers.



Changes for JB Series Low Profile Tactile Switches

	Before Change	After Change
Switch Case	Example Shown: JB15FP Top View 	Example Shown: JB15FP Top View

Notes

- There are no changes to any of the switches’ dimensions or mechanical specifications.
- Contact information is below if more details are needed.

JB Series Effected Standard Part Numbers				
Nonilluminated	JB15FP	JB15KP	JB15HFP	JB15HKP
Illuminated	JB15LPC	JB15HLPC	JB15LPE	JB15HLPE
	JB15LPF	JB15HLPF	—	—

Effective Date

Changes for specific models of JB Series low profile process sealed tactiles will be effective January 2027. However, the date may be subject to change depending on inventory of the products.

NKK SWITCHES HONG KONG CO., LTD.

Rm. 601, Fook Yip Building, 53-57 Kwai Fung Crescent, Kwai Chung, N.T., Hong Kong.
Tel.: (852)2366-6634 Fax.: (852)2366-6803 www.nkkswitches.com.hk E-mail: info@nkkswitches.com.hk

NKK SWITCHES CHINA CO., LTD.

Rm. 702, Center Tower, Huaning Plaza, 300 Xuanhua Rd., Changning, Shanghai China
Tel.: (86)21-62496574 Fax.: (86)21-62483375 www.nkkswitches.com.cn E-mail: info@nkkswitches.com.cn