

Contact No. 338

NKK
SWITCHES

Change Notice

A Indicators

Changes to LED Specifications for A Series Indicators

Type of Change:

- ☒ Engineering ☐ Part Number
☒ Product ☒ Appearance

Contact No. 338 was originally released August 2018. NKK Switches needs to add that there will also be a change to the Ambient Temperature Range in the LED Specifications. That is the only difference between the original Change Notice and this reissued version, effective April 26, 2019 (Contact No. 338 Revised).



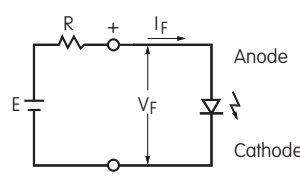
A Series Indicators with Red, Yellow or Green LEDs will Change

The LEDs for A Series Indicators will be changing. This will result in different electrical values from the previous LEDs for Red, Yellow and Green. The revision applies to standard and custom indicators. Following are comparisons between the specifications and a table of effected standard part numbers.

CHANGES TO LED SPECIFICATIONS							
Electrical specifications are determined at a basic temperature of 25°C.		Before Change			After Change		
		C	E	F	C	E	F
LED is colored in OFF state	Color	Red	Yellow	Green	Red	Yellow	Green
Maximum Forward Current	I_{FM}	50mA	50mA	50mA	30mA	30mA	30mA
Typical Forward Current	I_F	30mA	30mA	30mA	20mA	20mA	20mA
Forward Voltage	V_F	1.7V	2.2V	2.1V	2.1V	2.1V	2.2V
		$I_F = 30mA$	$I_F = 30mA$	$I_F = 30mA$	$I_F = 20mA$	$I_F = 20mA$	$I_F = 20mA$
Maximum Reverse Voltage	V_{RM}	4V	4V	4V	5V	5V	5V
Current Reduction Rate Above 25°C	ΔI_F	0.67mA/°C	0.67mA/°C	0.67mA/°C	0.40mA/°C	0.40mA/°C	0.40mA/°C
Ambient Temperature Range		-30°C ~ +85°C			-25°C ~ +85°C		

Notes

- The LED circuit is isolated and requires an external power source.
- If the source voltage is greater than the LED's rated voltage, a ballast resistor must be connected in series with the LED. The resistor value can be calculated by using the formula shown here.
- There are no changes to any other specifications or external dimensions.
- Contact the factory if further details are needed.



$$R = \frac{E - V_F}{I_F}$$

Where: R = Resistor Value (Ohms)
E = Source Voltage (V)
 V_F = Forward Voltage (V)
 I_F = Forward Current (A)

A Indicator Part Numbers			
A01BC	A01HC	A01PC	A01VC
A01BE	A01HE	A01PE	A01VE
A01BF	A01HF	A01PF	A01VF

Effective Date

LED changes for A Series Indicators will be effective April 2019.

NKK SWITCHES HONG KONG CO., LTD.

Rm. 601, Fook Yip Building, 53-57 Kwai Fung Crescent, Kwai Chung, N.T., Hong Kong.
Tel.: (852)2366-6634 Fax.: (852)2366-6803 www.nkkswitches.com.hk E-mail: info@nkkswitches.com.hk

NKK SWITCHES CHINA CO., LTD.

Rm. 702, Center Tower, Huaning Plaza, 300 Xuanhua Rd., Changning, Shanghai China
Tel.: (86) 21-62496574 Fax: (86) 21-62483375 www.nkkswitches.com.cn E-mail: info@nkkswitches.com.cn