

# Change Notice EB, M, MB2400 & MB2500 Series

## Changes for AT617 LED & AT212 Bezel

Type of Change:

- Engineering     Part Number  
 Product         Appearance

1. The AT617 LEDs used with M Rockers and EB, MB2400 and MB2500 Pushbuttons will be undergoing changes. This will result in revisions to some of the dimensions and electrical values, and will apply to red, yellow and green LEDs for standard or custom switches. Following is the comparison between the specifications before and after the changes.

Revisions for the AT212 Bezel are on page 2.



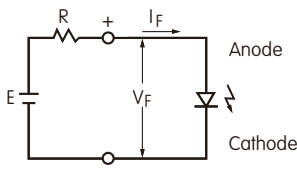
EB Series Pushbutton with AT212 Bezel & AT617 LEDs

### CHANGES TO LED SPECIFICATIONS FOR AT617

Electrical specifications are determined at a basic temperature of 25°C.		Before Change			After Change		
		<b>C</b>	<b>E</b>	<b>F</b>	<b>C</b>	<b>E</b>	<b>F</b>
	Color	Red	Yellow	Green	Red	Yellow	Green
Maximum Forward Current	$I_{FM}$	30mA	30mA	25mA	30mA	30mA	30mA
Typical Forward Current	$I_F$	20mA	20mA	20mA	20mA	20mA	20mA
Forward Voltage	$V_F$	2.0V	2.1V	2.25V	2.1V	2.1V	2.2V
		$I_F = 20mA$	$I_F = 20mA$	$I_F = 20mA$	$I_F = 20mA$	$I_F = 20mA$	$I_F = 20mA$
Maximum Reverse Voltage	$V_{RM}$	5V	5V	5V	5V	5V	5V
Current Reduction Rate Above 25°C	$\Delta I_F$	0.40mA/°C	0.40mA/°C	0.33mA/°C	0.40mA/°C	0.40mA/°C	0.40mA/°C
Ambient Temperature Range		-15°C ~ +70°C			-15°C ~ +70°C		

#### Notes

- The LED circuit is isolated and requires an external power source.
- If the source voltage is greater than the LED's rated voltage, a ballast resistor must be connected in series with the LED. The resistor value can be calculated by using the formula shown here.
- Contact information is below if more details are needed.



$$R = \frac{E - V_F}{I_F}$$

Where: R = Resistor Value (Ohms)  
 E = Source Voltage (V)  
 $V_F$  = Forward Voltage (V)  
 $I_F$  = Forward Current (A)

Before Change	After Change

#### Effective Date

Changes for AT617 LEDs will be effective June 2020.

### NKK SWITCHES HONG KONG CO., LTD.

Rm. 601, Fook Yip Building, 53-57 Kwai Fung Crescent, Kwai Chung, N.T., Hong Kong.  
 Tel: (852)2366-6634 Fax: (852)2366-6803 www.nkkswitches.com.hk E-mail: info@nkkswitches.com.hk

### NKK SWITCHES CHINA CO., LTD.

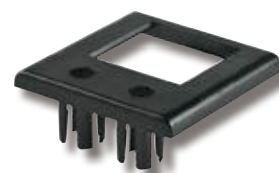
Rm. 702, Center Tower, Huaning Plaza, 300 Xuanhua Rd., Changning, Shanghai China  
 Tel: (86)21-62496574 Fax: (86)21-62483375 www.nkkswitches.com.cn E-mail: info@nkkswitches.com.cn

# Change Notice EB, M, MB2400 & MB2500 Series

## Changes for AT617 LED & AT212 Bezel

Type of Change:

- Engineering     Part Number
- Product         Appearance



2. The AT212 bezels used with M Rockers and EB, MB2400 and MB2500 Pushbuttons will be undergoing changes. This will result in some dimension revisions to accommodate the modified AT617 LEDs. Following is the comparison between the dimensions before and after the changes.

The AT212 Bezel is slated for changes that will accommodate the AT617 LEDs.

CHANGES FOR AT212 BEZEL			
Before Change		After Change	
<p>Top View</p>	<p>Side View</p>	<p>Top View</p>	<p>Side View</p>

**Notes**

- The new AT617 LEDs will only fit with the revised AT212 bezel.
- Contact information is below if more details are needed.

**Effective Date**

Changes for AT212 bezels will be effective June 2020.

**NKK SWITCHES HONG KONG CO., LTD.**

Rm. 601, Fook Yip Building, 53-57 Kwai Fung Crescent, Kwai Chung, N.T., Hong Kong.  
 Tel.: (852)2366-6634 Fax: (852)2366-6803 www.nkkswitches.com.hk E-mail: info@nkkswitches.com.hk

**NKK SWITCHES CHINA CO., LTD.**

Rm. 702, Center Tower, Huaning Plaza, 300 Xuanhua Rd., Changning, Shanghai China  
 Tel.: (86)21-62496574 Fax: (86)21-62483375 www.nkkswitches.com.cn E-mail: info@nkkswitches.com.cn